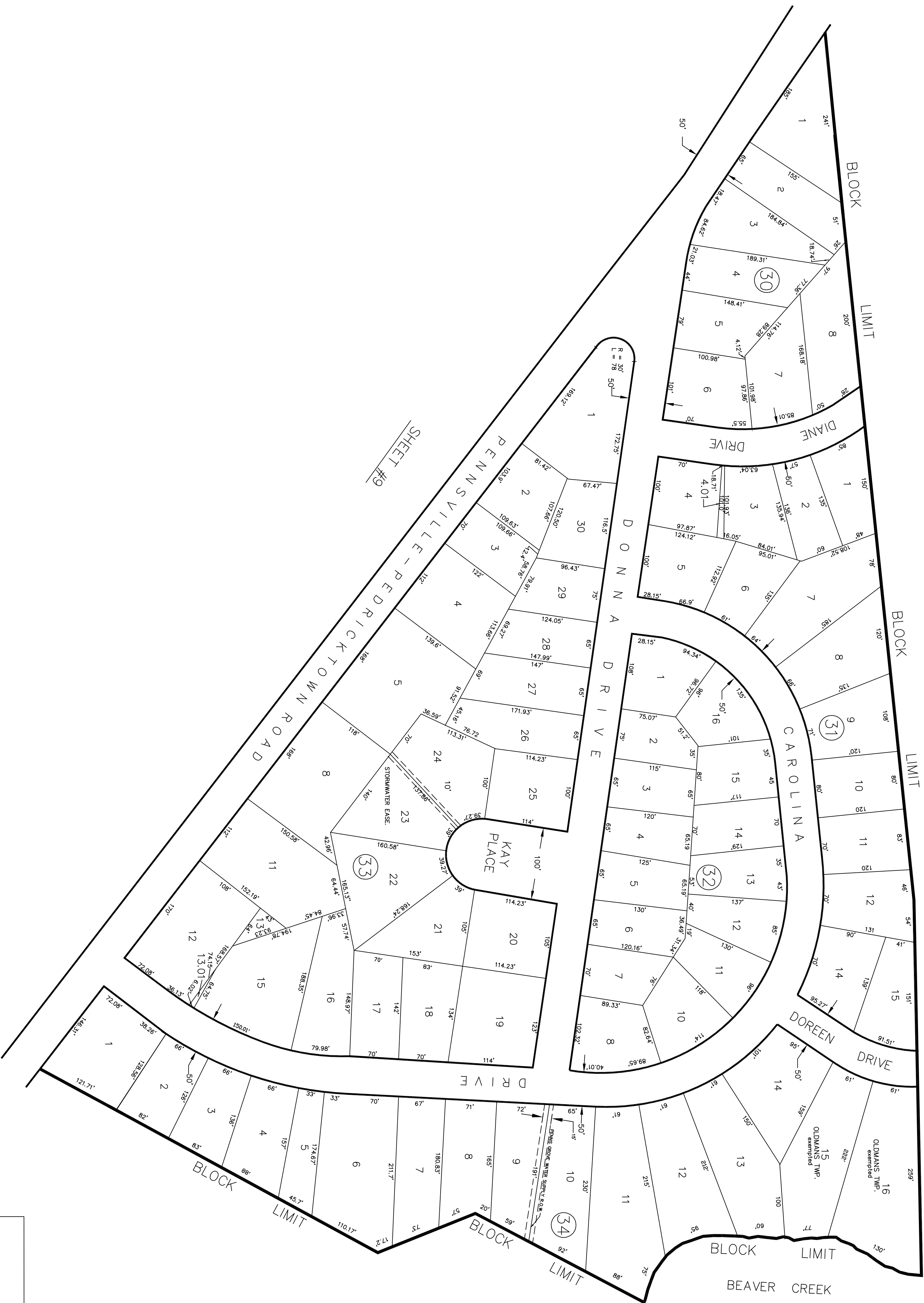


SHEET #8



SHEET #8

THIS SHEET IS A DIGITIZED COPY OF THE TAX MAP ORIGINALLY PREPARED BY
W.W. SUMMERILL, L.S., MAY 1960. THE ORIGINAL APPROVED MAP IS ON FILE IN THE
OFFICE OF TEDESCO ENGINEERING LLC

BLOCK 31, LOT 13-NOT ASSIGNED
BLOCK 32, LOT 9-NOT ASSIGNED
BLOCK 33, LOTS 6,7,9,10,14-NOT ASSIGNED

TAX MAP
TOWNSHIP OF OLDMANS
SALEM COUNTY, NEW JERSEY
SCALE 1" = 100'
MAY 1960
W. W. SUMMERILL, P.E. & L.S.
NJ LIC. NO. 2448
PENNS GROVE, NEW JERSEY, 08069